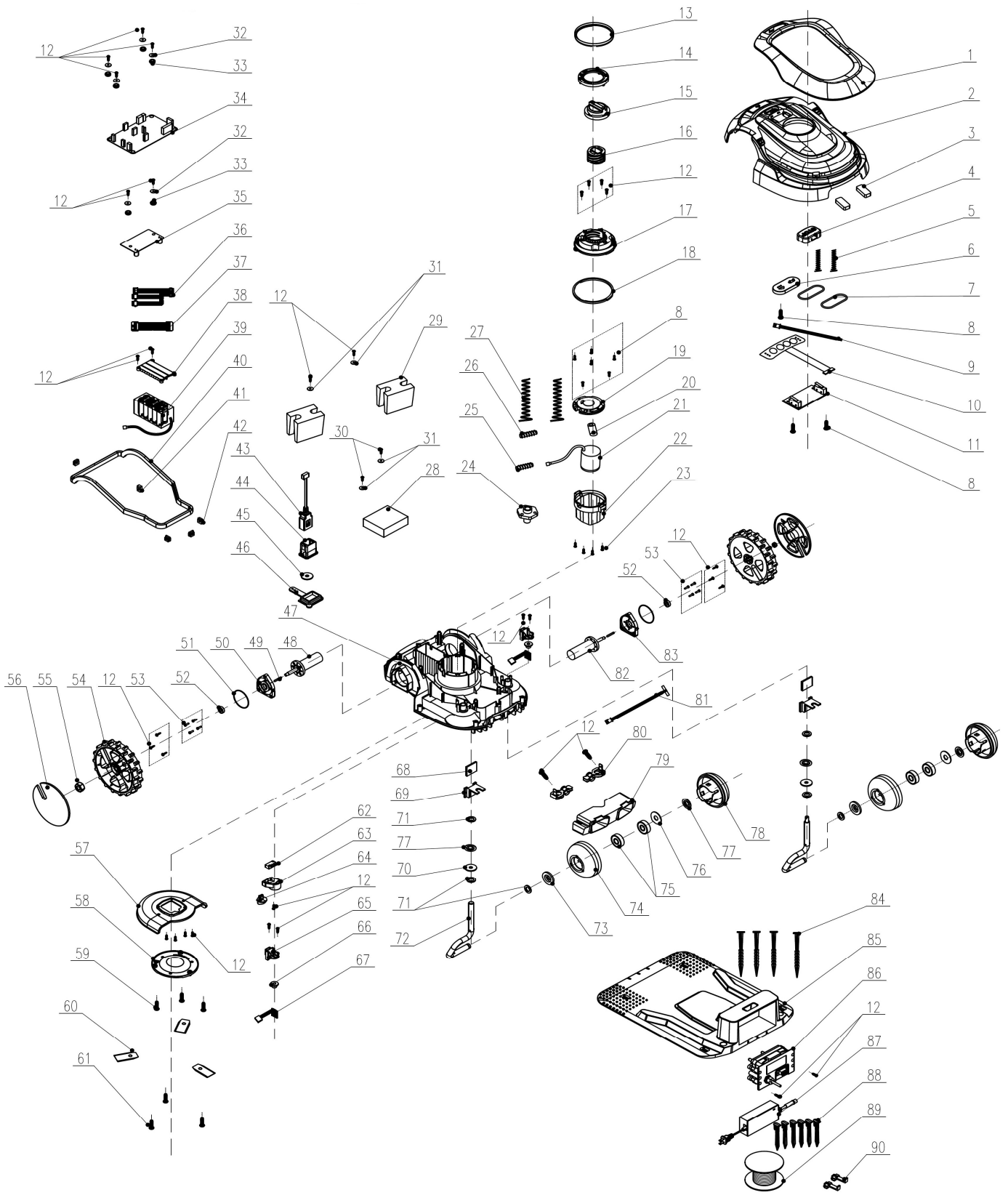


VILLYBOT 2.0





EXPLODED PARTS LIST

Year: 2021

Page(s): 2/2

VILLYBOT 2.0

No	Code	Name	Qty	No	Code	Name	Qty
1	067315	Decorative Covers	1	49	067345	Cylindrical Pin	2
2	067314	Loam Cake	1	50	067346	Fixed plate	1
3	067316	Rubber Plug	2	51	067347	O-Ring	2
4	067307	Button	1	52	067348	Seal ring	2
5	067317	Conical Compression Spring	2	53	067349	Composite Groove Pan Head Three Combination Set Screws	8
6	067318	Cover (rain cover)	1	54	067310	Wheel	2
7	067319	Seal ring	2	55	067350	Type 1 non-metallic insert hex lock nut	2
8		Cross Recessed Pan Head Tapping Screw	13	56	067351	Wheel cover	12
9	067320	Connection line (rainwater)	1	57	067352	Safety mask	1
10	067321	Panel (film button)	1	58	067353	Support (knife tray)	1
11	067322	Electronic Components (Adapter Board)	1	59	067354	Hexagon Socket Countersunk Head Set Screw	3
12		Self-Tapping Screw	41	60	65392	blade set	6
13	067323	Sealing ring (upward)	1	61		Pan head screws (blade screws)	6
14	067324	Knob cover	1	62	067355	Single Micro Switch	1
15	067325	Button	1	63	067356	Under cover (key box)	1
16	067326	Knob	1	64	067357	Key	1
17	067327	Knob seat	1	65	067358	Holder	2
18	067328	Seal ring	1	66	067359	Tube sleeve (universal wheel sleeve)	2
19	067329	Cover	1	67	067360	Electronic components (lifting plate)	2
20	067384	Circular	1	68	067361	Magnetic tile	2
21	067308	Motor assembly (mowing)	1	69	067362	Sliding Block	2
22	067330	Rear Fixed Seat	1	70	067363	Oiler cap seal	2
23		Composite Groove Pan Head Three Combination Set Screws	4	71		Flat Washer	6
24	067331	Fixed base (cutter head)	1	72	067364	Wheel axle assembly	2
25		Set screw	1	73	067365	Cover	2
26		Set screw	1	74	067366	Wheel cover	2
27	067332	Compression Spring	2	75	067367	Bearing	4
28		Counter Weight	1	76	067368	Gasket	2
29		Counter Weight	2	77	067369	Internal tooth washer	4
30		Self-Tapping Screw	2	78	067370	Wheel cover	2
31		Brake Washer	6	79	067371	Fixed plate	1
32		Flat Gasket	6	80	067372	Contact sheet	2
33		Beam	6	81	067373	Connection cable (charging cable)	1
34	067333	Electronic components (main control board)	1	82	067311	Motor assembly (left)	1
35	067334	Electronic components (sensor board)	1	83	067374	Fixed plate (left)	1
36	067335	Connection cable (main board and detection board)	1	84	067375	Wire fixing nails	4
37	067336	Cable (Motherboard and Adapter Board)	1	85	067312	Floor	1
38	067337	Cover (battery cover)	1	86	067376	Electronic components (charging case components)	1
39	067338	Battery pack assembly	1	87	067211	Electronic components (adapter components)	1
40	067339	Sealing ring (whole machine)	1	88	065933	Wire pegs (50 pcs set)	90
41	067340	Rubber stopper (at the mowing motor)	1	89	065931	Connecting line 100m	1
42	067341	Plug (connection line)	4	90	067377	Wire buckle (connector)	2
43	067342	Connection cable (usb data cable)	1				
44	067343	Fixed base (usb)	1		069939	Garage set (optional)	
45		Collar	1				
46	067344	Rubber stopper (USB)	1				
47	067212	cabinet	1				
48	067309	Motor assembly	1				